

# IAM SERIES

---

## H3 MODELS

### INDEX

---

40	TECHNICAL DATA
41	DIMENSIONAL DRAWINGS
48	POWER CHARTS
50	SIDE LOAD CHARTS
53	ORDERING INSTRUCTIONS

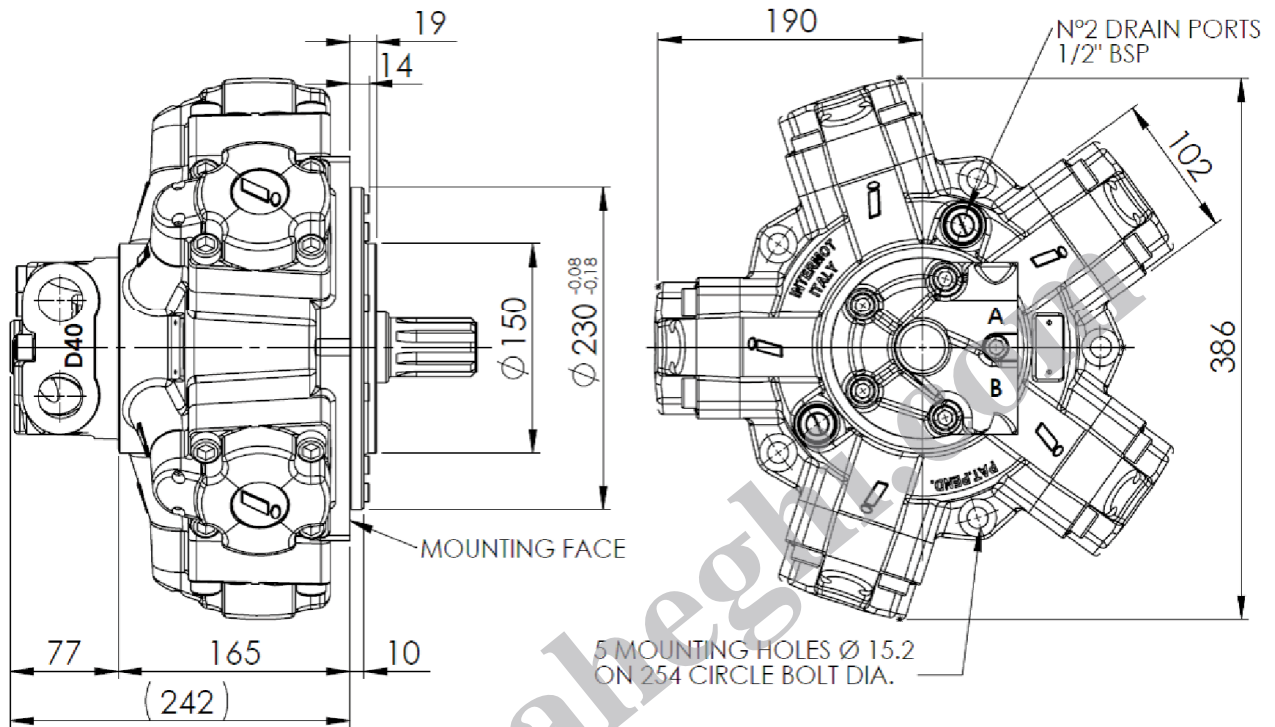
www.Laheghi.com

## IAM H3 - TECHNICAL DATA

MODEL	N° of pistons	Displacement	Specific Torque	Pressure			Speed		Max Case Pressure	Max Power	Dry Weight	Inertia moment of rotating parts		
				Max Cont.	Max Int.	Peak	Max Continuous	Peak						
		cc/rev	Nm/bar	bar	bar	bar	rpm	rpm	bar	hp	kW	kg	kg cm <sup>2</sup>	
IAM H3	350	5	349	5,6	250	300	350	630	700	6	91	68	68	214
	400	5	404	6,4	250	300	350	600	680	6	91	68	68	214
	450	5	452	7,2	250	300	350	600	680	6	91	68	68	214
	500	5	491	7,8	250	300	350	600	680	6	91	68	68	214
	600	5	616	9,8	250	300	350	550	630	6	91	68	68	214
	650	5	660	10,5	250	300	350	500	580	6	91	68	68	214
	700	5	707	11,3	250	300	350	450	500	6	91	68	68	214
	800	5	779	12,4	250	300	350	400	450	6	91	68	68	214

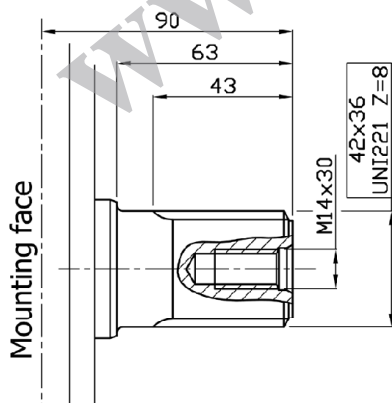
# IAM H3 - DIMENSIONAL DRAWINGS

**IAM 350 – 400 – 450 – 500 – 600 – 650 – 700 H3**

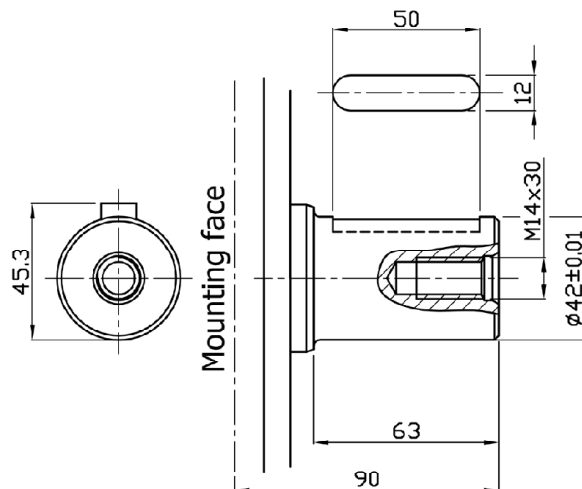


**SHAFT OPTIONS**

A0: Standard splined shaft

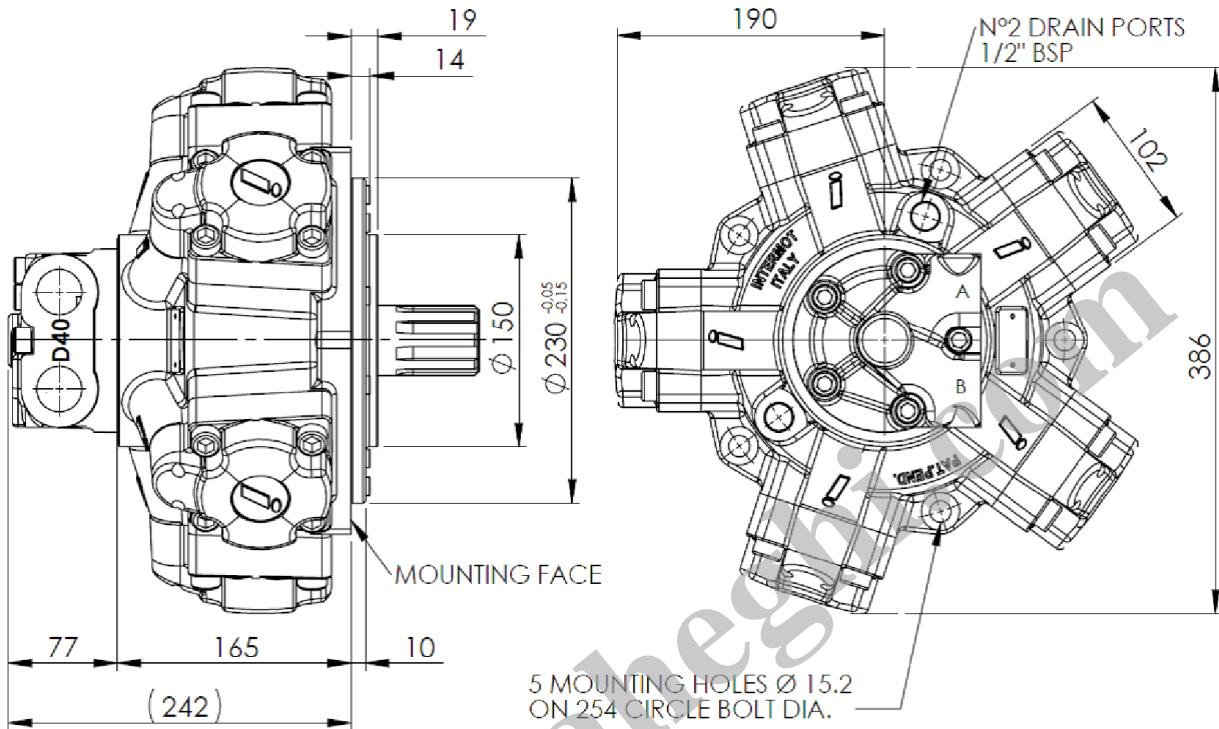


A2: Parallel shaft on request



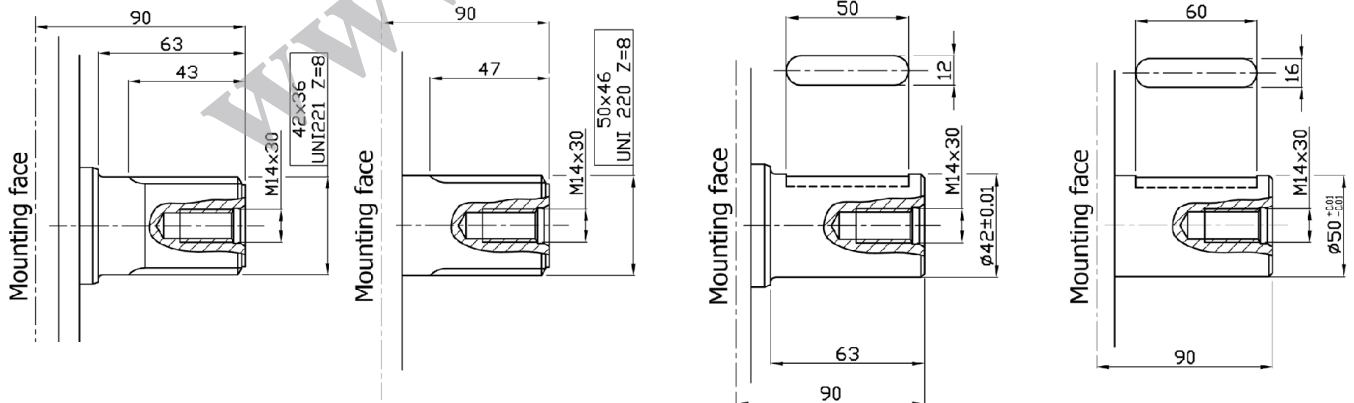
IAM 350 H3 A0 AVAILABLE ON REQUEST

**IAM 800 H3**

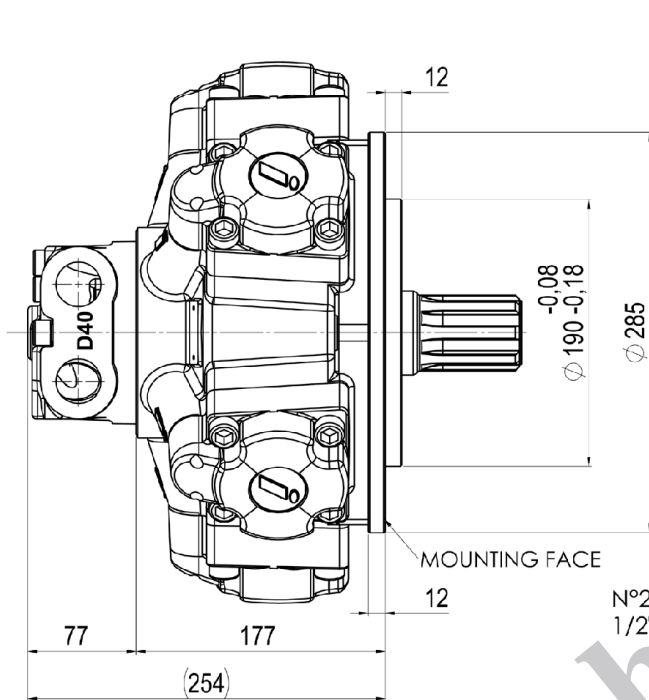


**SHAFT OPTIONS**

A0: Standard splined shaft    A1: Splined shaft on request    A2: Parallel shaft on request    A22: Parallel shaft on request

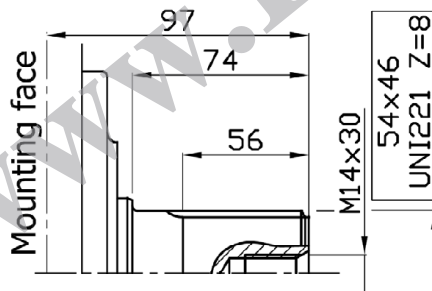


**IAM 450/C H3**

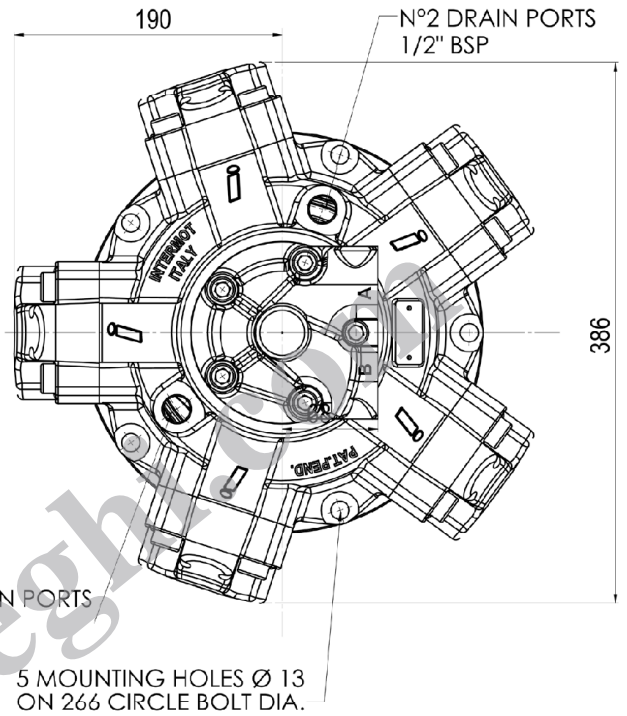
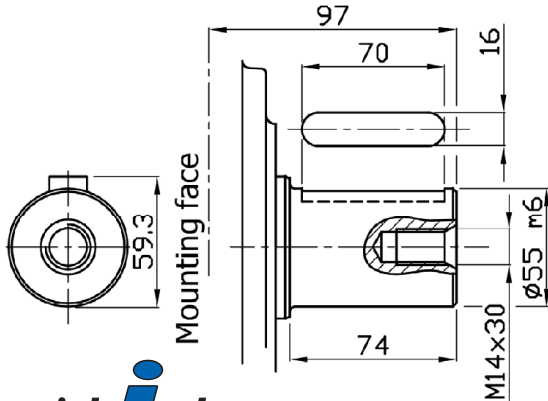


**SHAFT OPTIONS**

A1: Standard splined shaft

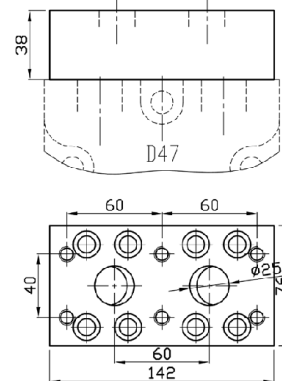


A2: Parallel shaft on request

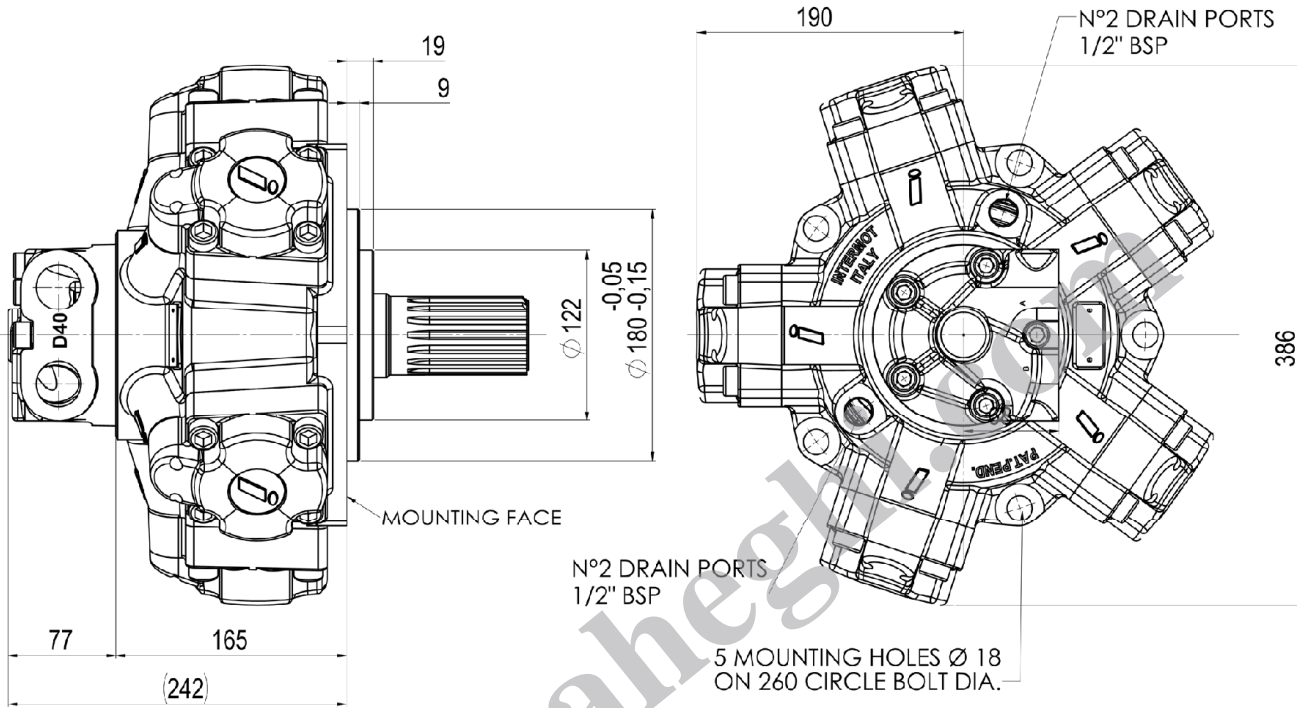


FL2: Connection block

Connection block, fitting D47 distributor, for motor MR 350/450/500/600/700/800



**IAM 450/B30 H3**

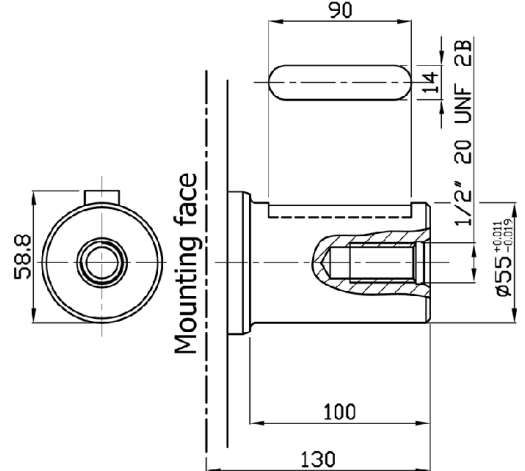
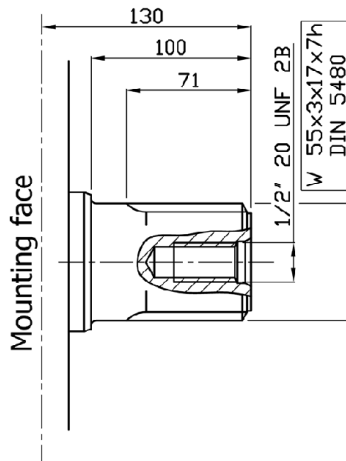
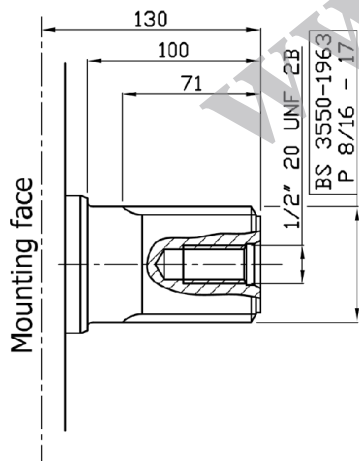


**SHAFT OPTIONS**

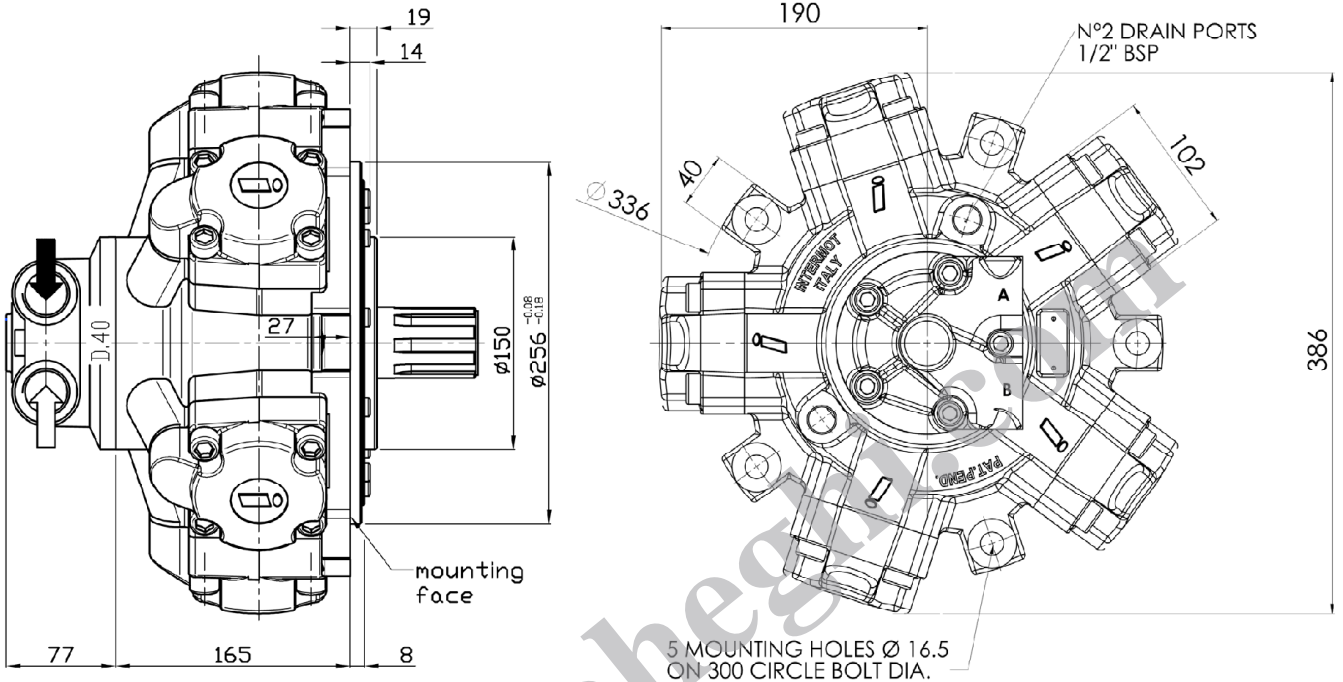
A0: Standard splined shaft

A1: Splined shaft on request

A2: Parallel shaft on request



**IAM 800/N H3**

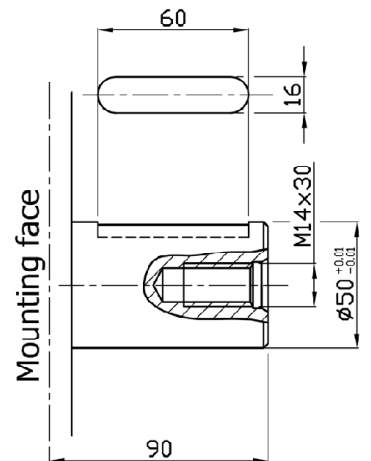
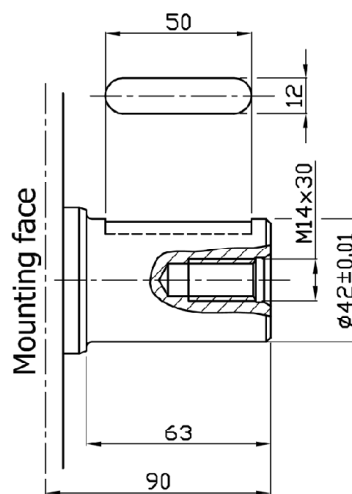
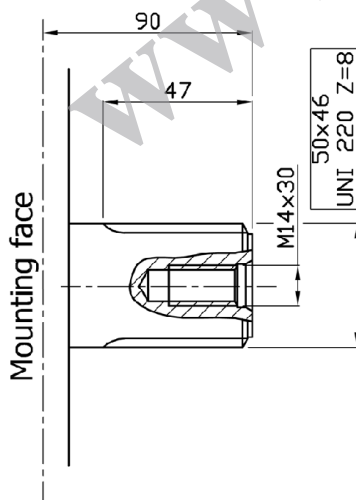


**SHAFT OPTIONS**

A0: Standard splined shaft

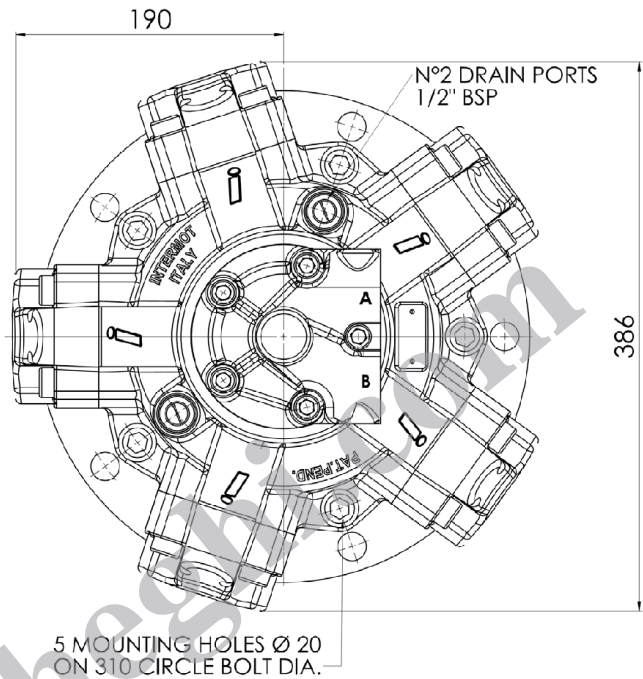
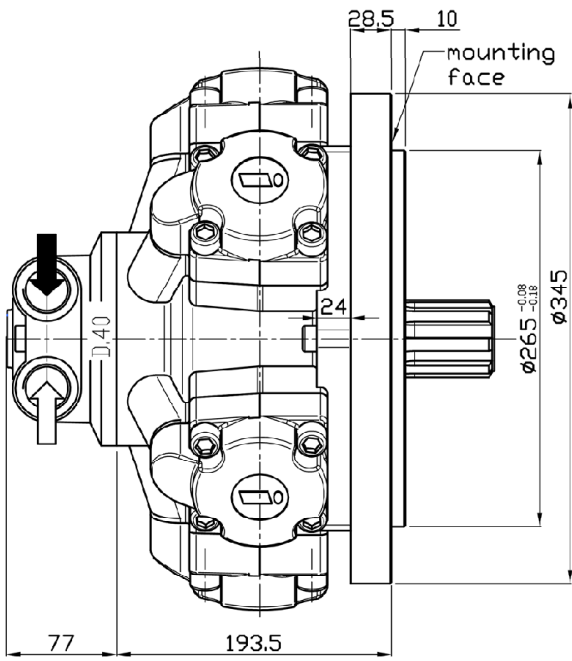
A2: Parallel shaft on request

A22: Parallel shaft on request





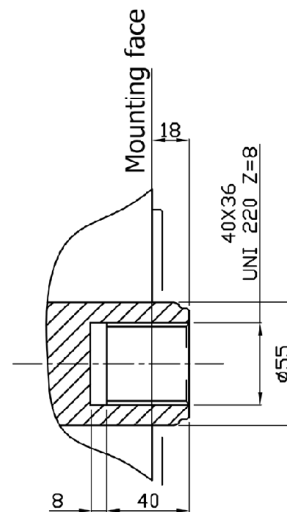
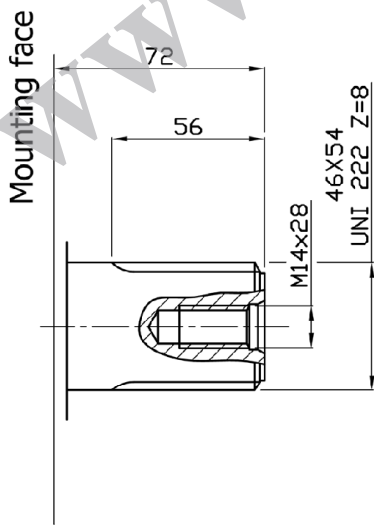
**IAM 400/GM3 – 450/GM3 – 500/GM3 – 600/GM3 – 700/GM3 H3**



**SHAFT OPTIONS**

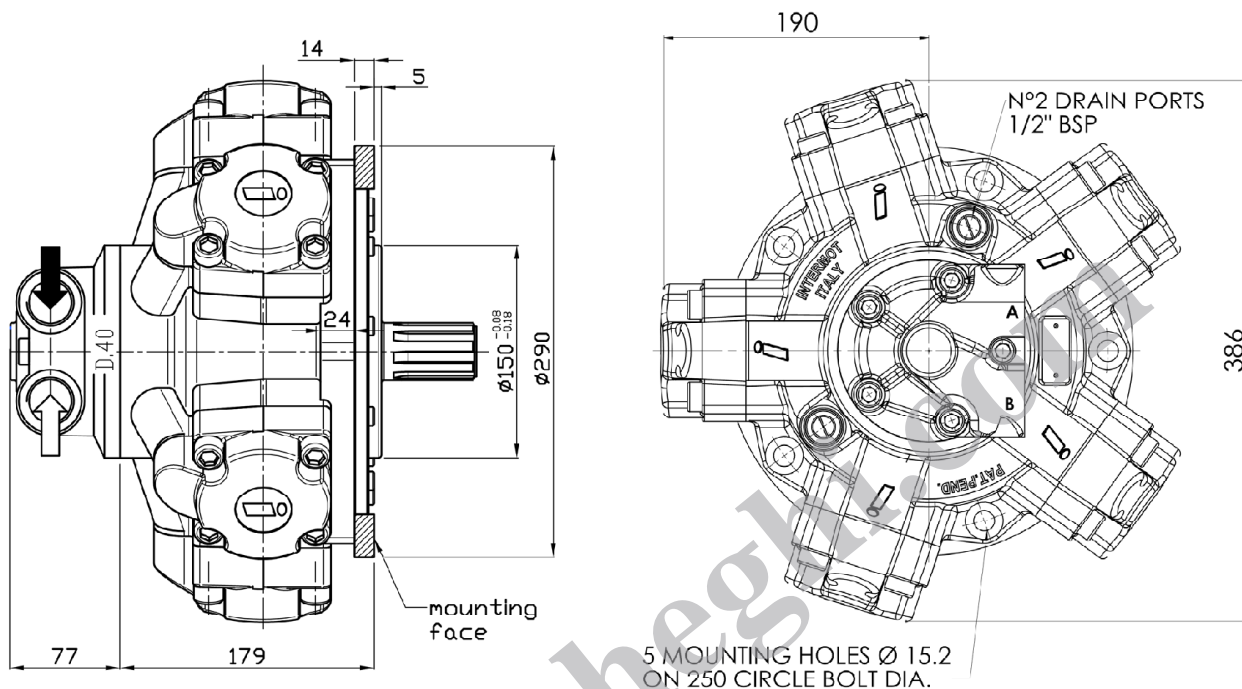
A0: Standard splined shaft

A3: Female shaft on request





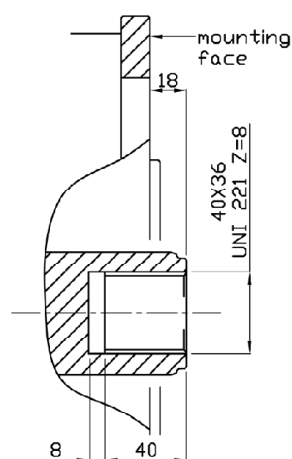
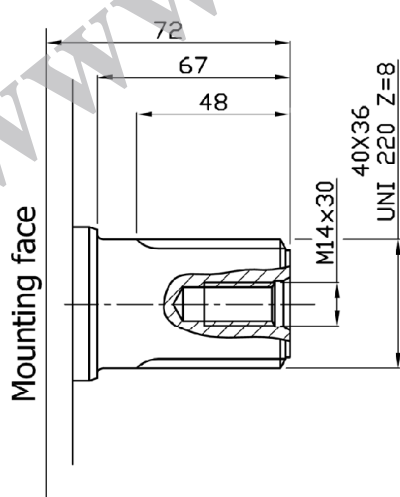
**IAM 400/S – 450/S – 500/S – 600/S – 700/S H3**



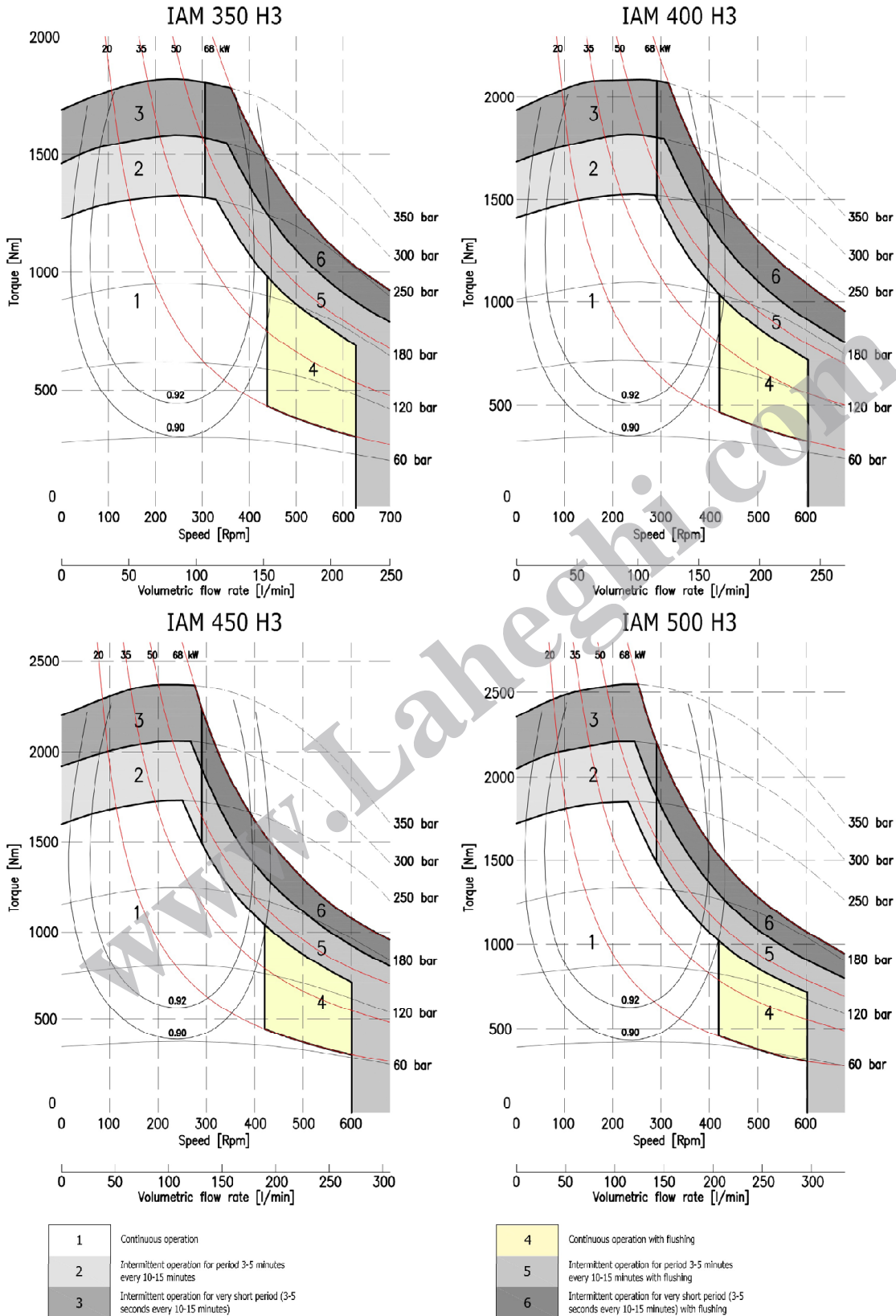
**SHAFT OPTIONS**

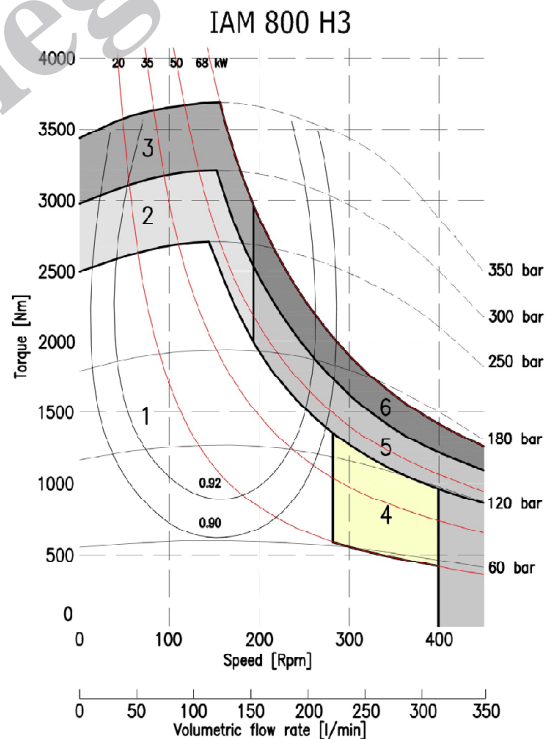
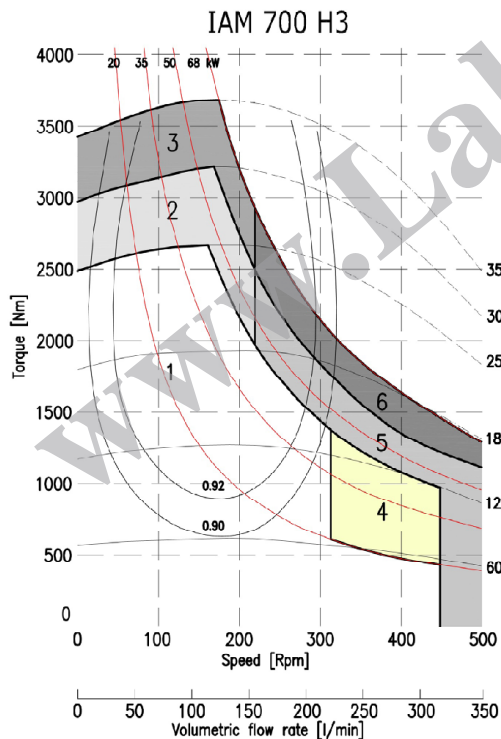
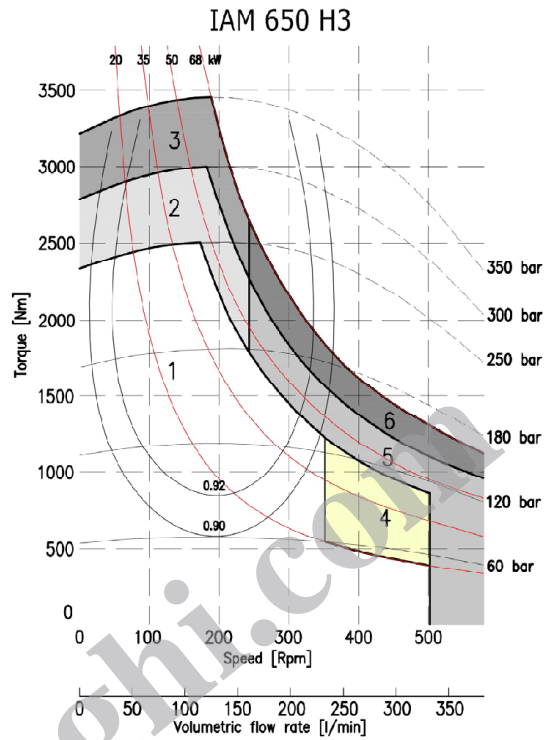
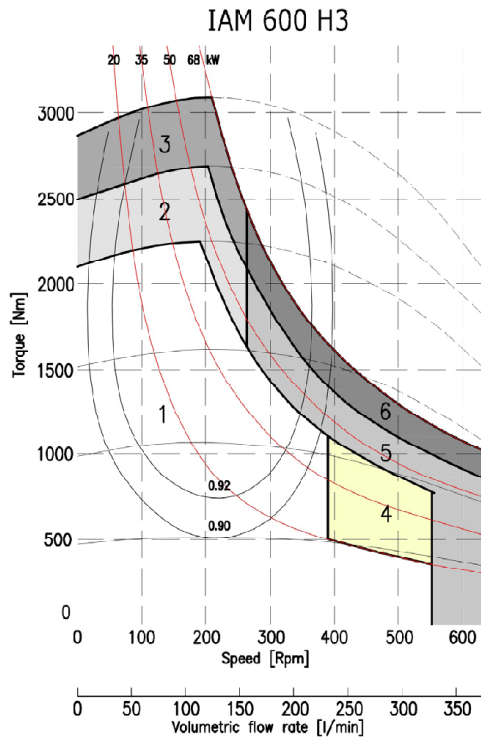
A0: Standard splined shaft

A3: Female shaft on request



# IAM H3 - POWER CHARTS

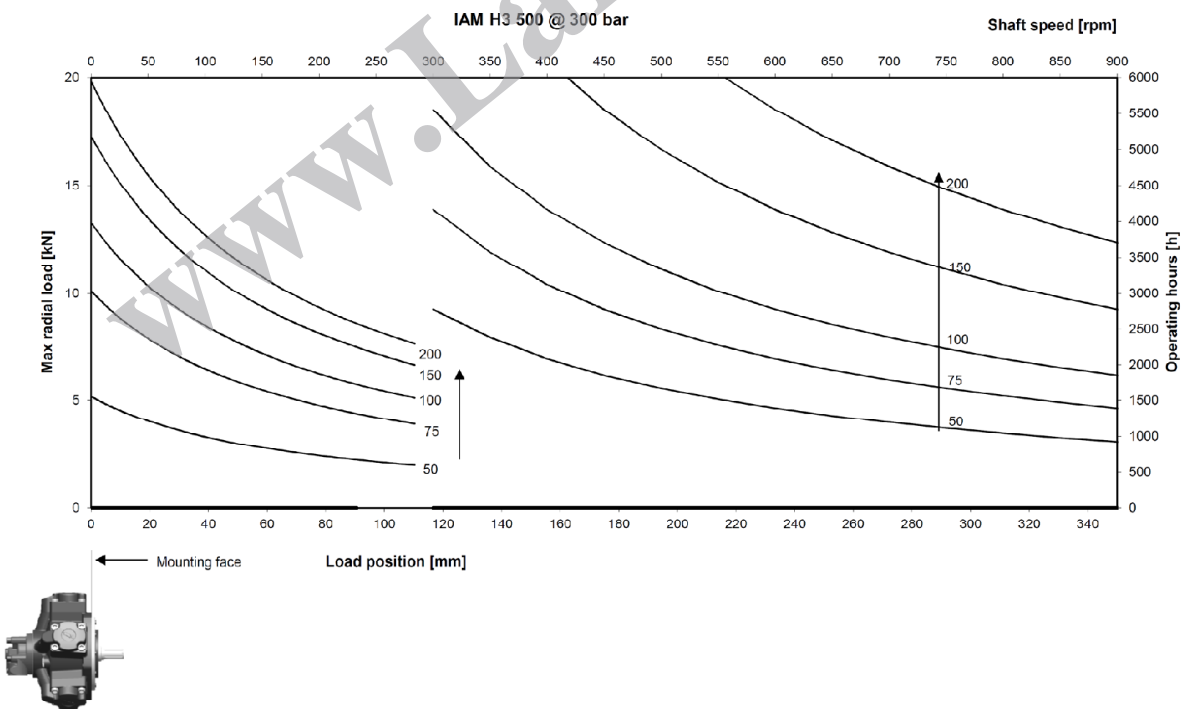
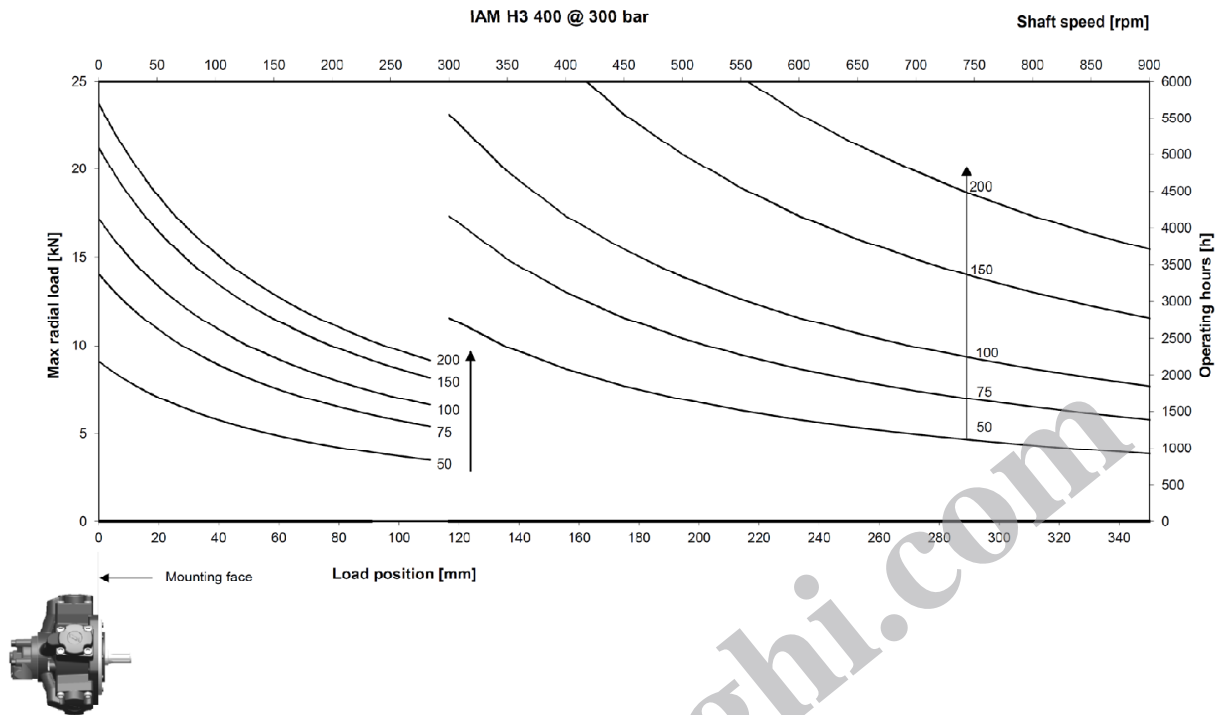


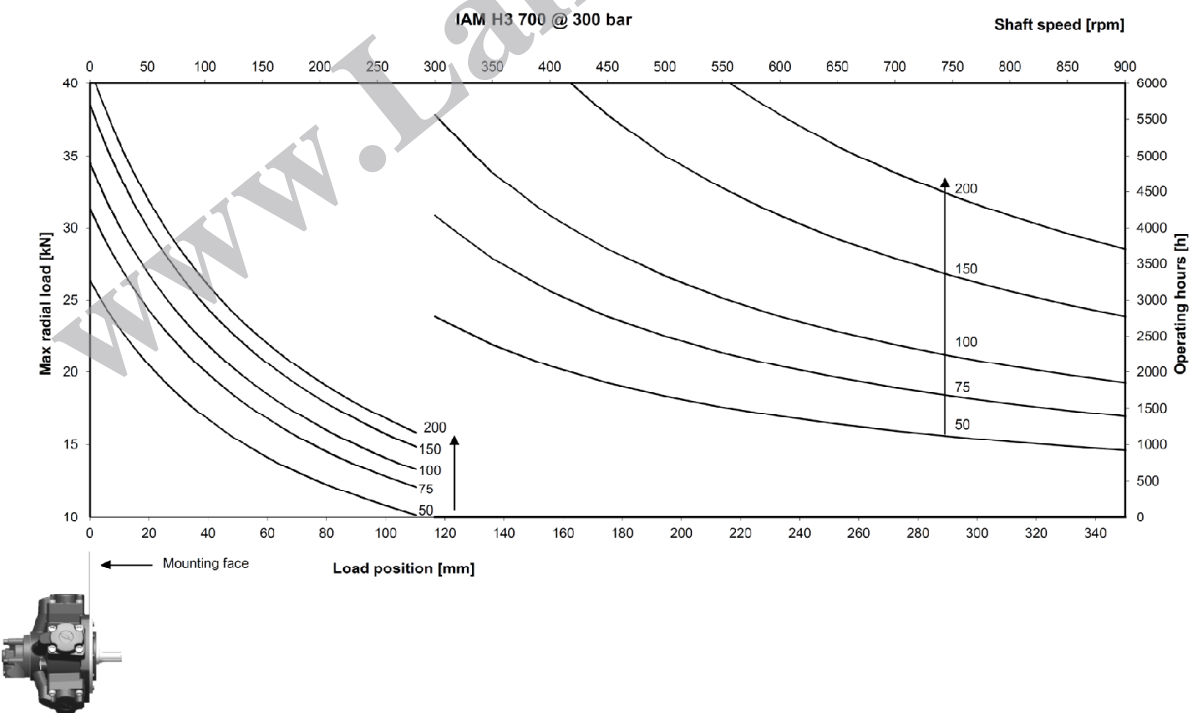
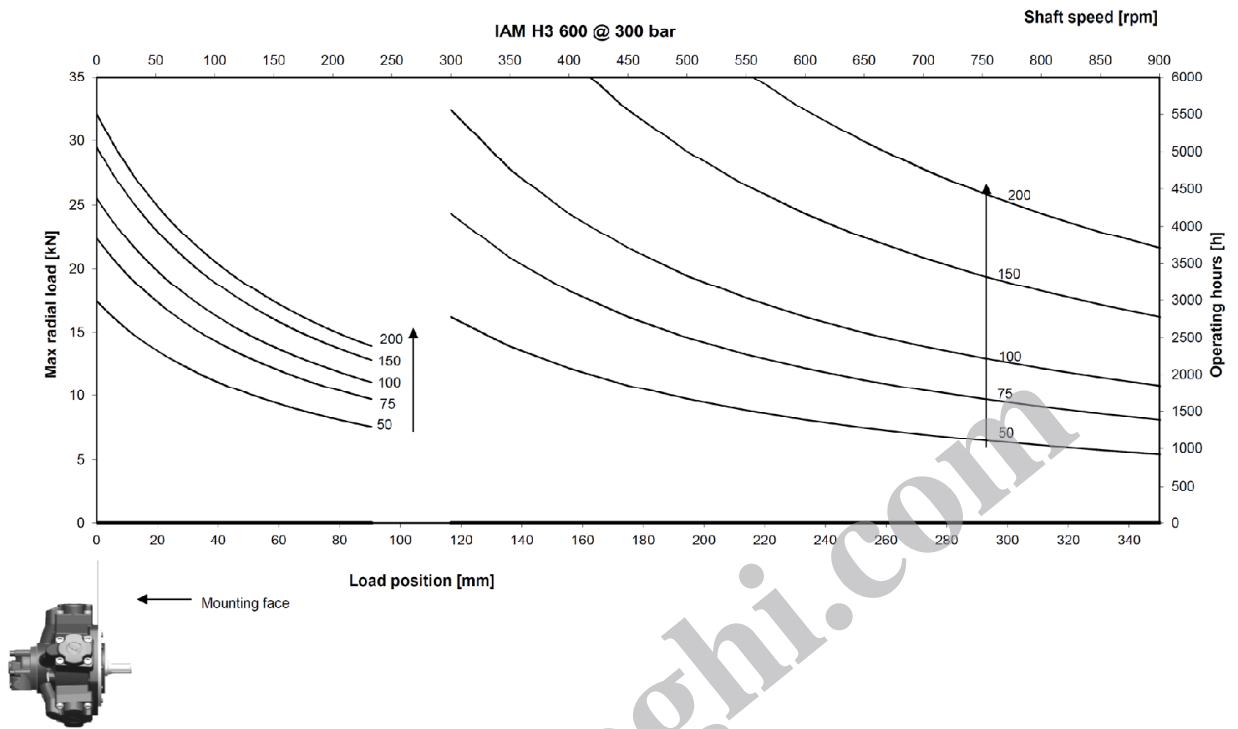


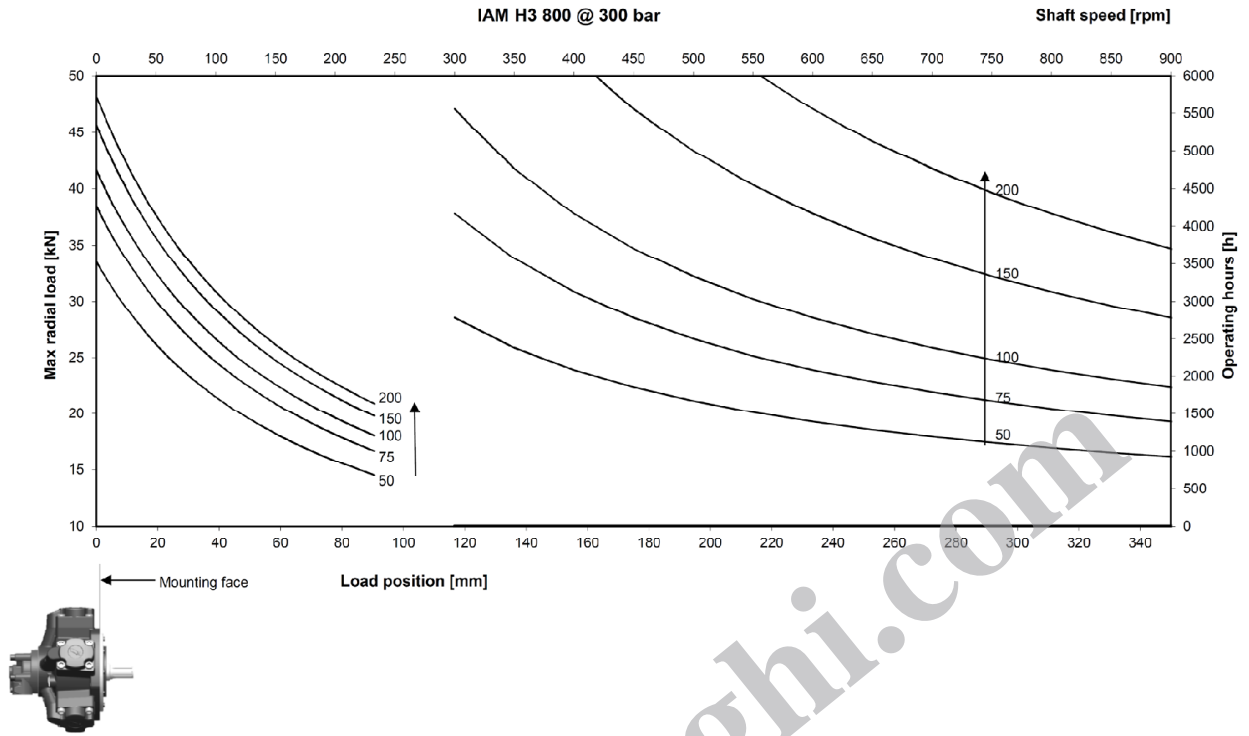
1	Continuous operation
2	Intermittent operation for period 3-5 minutes every 10-15 minutes
3	Intermittent operation for very short period (3-5 seconds every 10-15 minutes)

4	Continuous operation with flushing
5	Intermittent operation for period 3-5 minutes every 10-15 minutes with flushing
6	Intermittent operation for very short period (3-5 seconds every 10-15 minutes) with flushing

# IAM H3 - SIDE LOAD CHARTS







# IAM H3 - ORDERING INSTRUCTIONS

IAM	---	/---	H3	A --	D ---	---	SB _
<b>Model</b> IAM							
<b>Displacement</b> 350 cc/rev 400 cc/rev 450 cc/rev 500 cc/rev 600 cc/rev 650 cc/rev 700 cc/rev 800 cc/rev							
<b>Interchangeability</b> /C /B30 /N /GM3 /S							
<b>Housing</b> H3							
<b>Shaft</b> A0 – Standard splined shaft A1 – Special splined shaft A2 – Parallel keyed shaft A22 – Parallel shaft A3 – Female shaft							
<b>Distributor</b> D31 – ¾" BSP D31G – ¾" BSP D310 – 1" BSP D40 – 1" BSP D47 – SAE 1" 3000 psi flange							
<b>Tachometer</b> K TA TB EST							
<b>Spline billet</b> SB3 – 36 UNI 221 SB4 – 46 UNI 220 SB5 – 46 UNI 221							

EXAMPLE :

IAM 600 H3 A0 D40

IAM 700 H3 A0 D40 TA SB3